

Engraving Built For Electrical Construction

Not local, just faster.



Product Catalog

Partnership you can count on.



When you work with Action Engraving, this is what you can expect on every project:

Quality & Accuracy

Customers receive a proof before production and every job is internally audited for accuracy.

Speed & Scale

Engineered for scale, we bring speed and consistency to every order, regardless of size.

Free Shipping

Shipping is always free, including overnight, with no impact on price.

Metal Engraving

We can deep engrave stainless steel and other metals with any color text at scale.

Inventory

We carry a range of device cover brands, plastics, and metals, sourcing anything not in inventory.

Customer Service

Our team delivers customer service with response times of 15 minutes or less.

We operate at the speed of your business.

Fast Response Time + Fast Production + Fast Delivery

Product Guide



Wall Plate/Device Covers 01



Phenolic Plastic Labels 03



Vinyl Decals 05



LaserIt & DuraBlack Aluminum 07



Stainless Steel Tags 09



Brass Tags/Markers 11

Case Studies 14



Device Covers

We carry a full line of Leviton, Pass & Seymour, Hubbell and Industrial plates and are happy to source what we don't carry. In-stock inventory means faster turnaround to keep your project moving.

PLASTIC DEVICE COVERS

- ✓ **Durability:** Thermoplastic and Polycarbonate wall plates are high heat and high impact resistant.
- ✓ **Compliance:** Meets UL 514D standards.
- ✓ **Markings:** Engravings are typically paint filled to ensure long-term legibility and NEC compliance for circuit identification.



STAINLESS STEEL DEVICE COVERS

- ✓ **Durability:** Corrosion resistant resulting in a non-combustible and virtually indestructible lifespan.
- ✓ **Marking Standard:** Laser etched leaving a permanent black mark or deep engraved allowing for a paint fill of any color.
- ✓ **Advantage:** Provides a sterile appearance with a lifecycle that matches the building's infrastructure.



Crouse-Hinds
by **EATON**

The following are the typical specifications and engraving locations for single-gang plates:

Text Size	1/8" to 3/8" (1/4" is standard)
Text Color	Any Color - Standard Colors are Black, White, Red
Plate Colors	White, Ivory, Red, Stainless Steel (Order other colors as needed)
Orientation	Portrait or Landscape (Portrait orientation is standard)
Engraving Locations	Top Center, Bottom Center, Both Top & Bottom

INDUSTRIAL DEVICE COVERS

- ✓ **Durability:** Made of galvanized steel or heavy-gauge aluminum. Designed to withstand physical impact.
- ✓ **Marking Standard:** Laser engraved leaving a permanent black mark or deep engraved allowing for a paint fill of any color.
- ✓ **Advantage:** Engineered specifically for 4-square and handy-box applications.

SPECIALITY DEVICE COVERS

- ✓ **Speciality Items:** We source and carry non-standard wall plate covers keeping all your engraving needs in one place.
- ✓ **Marking Standard:** Laser etched leaving a permanent black mark or deep engraved allowing for a paint fill of any color.
- ✓ **Advantage:** No need to source speciality covers separately.



Plastic Labels

LaserMax by Rowmark is the industry standard for electrical identification, delivering permanent, high-contrast legibility required to meet modern NEC compliance.



TECHNICAL DATA

Material	Microsurfaced Impact Acrylic
Finish	High Gloss, Matte Non-Glare, Brushed
Sheet Size	24"x24"
Engrave Depth	0.003" // 0.08mm
Environment	Indoor/Outdoor Weatherable UV Stable

LASERMAX PHYSICAL PROPERTIES

Tag Size	Customize size up to 24"x24"
Text Size	Customize size from 1/16"
Mounting	Industrial Tape and/or Holes

FEATURES

- ✓ **UV Stability:** Rated for both interior and exterior use.
- ✓ **Dimensional Stability:** Won't warp, shrink, or crack under standard mechanical stress or humidity variations.
- ✓ **Compliance:** Meets NEC 110.21(B) and 110.22 requirements.
- ✓ **Installation & Field Mounting:** Industrial adhesives and/or holes.

COMMON COLOR COMBINATIONS



Built for permanent identification in electrical systems where durability and clarity are critical.



Vinyl Decals

Built to bond to textured surfaces, this high tack vinyl material provides a durable, long-lasting labeling solution.

High tack vinyl ensures your labels stay in place and remain legible over time.

FEATURES

- ✔ **High Performance Adhesive:**
 Adhesive designed to bond to materials like plastic, powder coatings, and textured finishes.
- ✔ **Durable Indoor & Outdoor Performance:**
 Built to withstand harsh environments, including moisture, temperature changes, and general wear.
- ✔ **Versatile Application:**
 Ideal for electrical panels, equipment labeling, asset identification, and industrial environments.

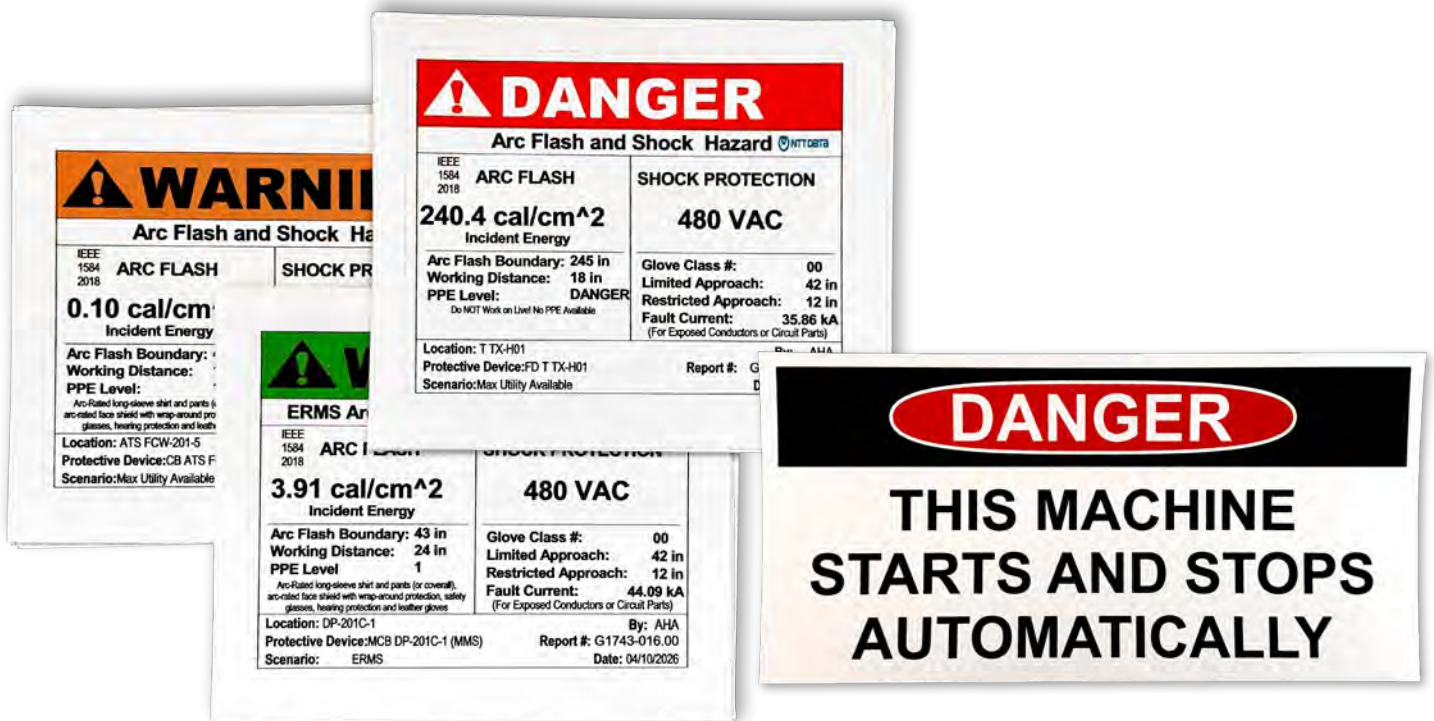


TECHNICAL DATA

Material	Calendared PVC Film	Service Temperature Range	Approx-40F to 176F
Finish	Gloss White	Outdoor Durability	Up to 5 Years
Adhesive	Permanent, High Tack Acrylic	Application Temperature	Min. 50F
Thickness	0.15mm	Compatible Inks	UV, Latex, Solvent, & Eco-Solvent

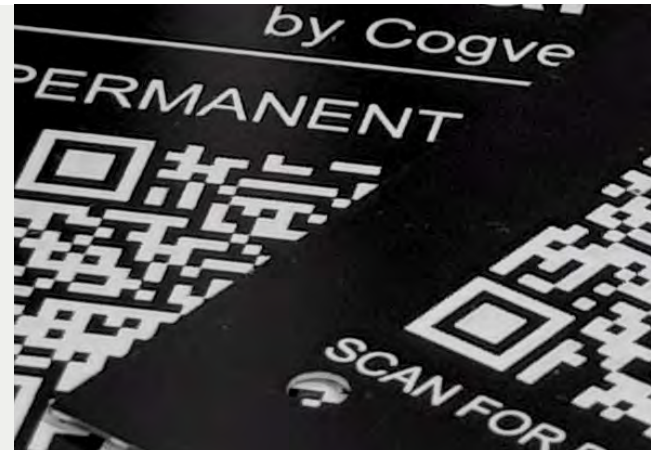
Used Across Every Part of the Job

- Pipe Markers
- Arc Flash & Safety
- Warning & Danger
- Barcode & Asset Identification
- Panel & Equipment
- Conduit & Junction Box
- Disconnect & Switch
- Data & Telecom
- Rack & Cabinet
- QR Codes
- Inspection & Maintenance
- Cable & Wire Identification



Laser-It Aluminum

These .020" pre-polished, lacquered aluminum sheets are designed to produce high-definition text and graphics that remain readable in demanding commercial environments.

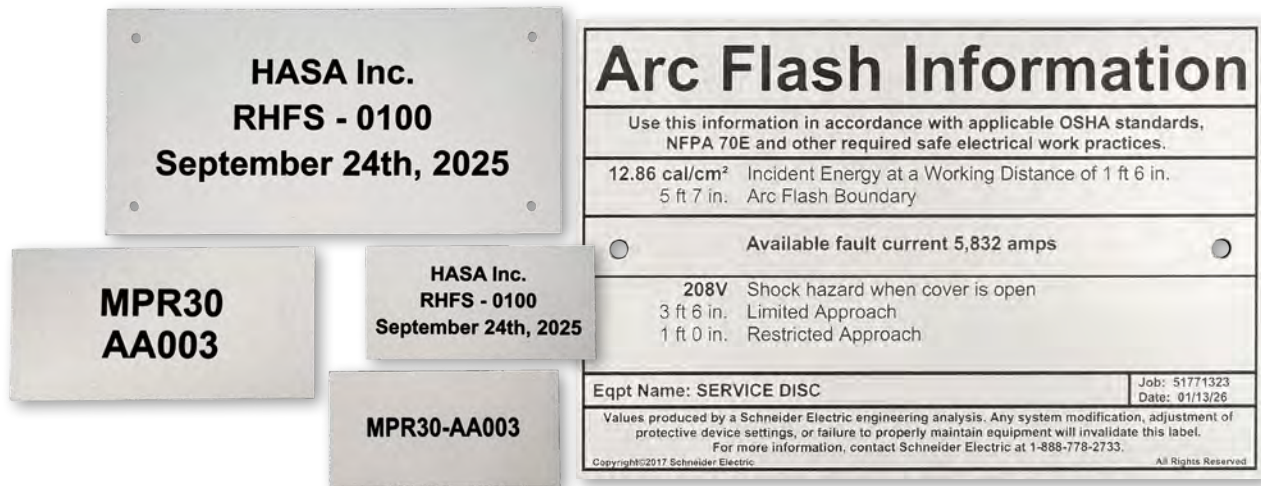


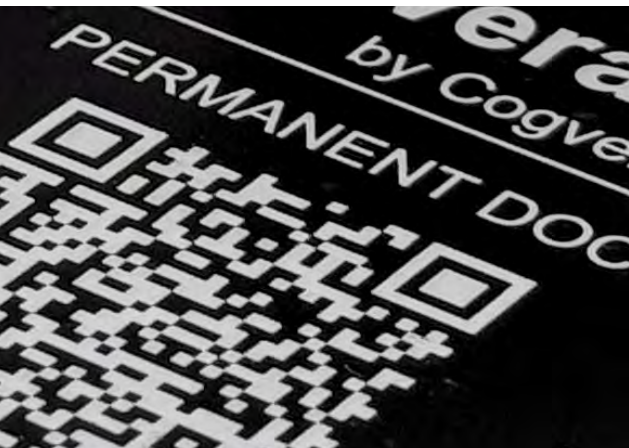
TECHNICAL DATA

Color	Silver
Size	Up to 12"x24"
Material	Pre-Polished Lacquered Aluminum
Thickness	0.020"
UV Resistant	Limited
Finish	Matte
Mounting	Industrial Tape and/or Holes

FEATURES

- ✓ **Versatile Fabrication:** Easily sheared, drilled, or punched for custom mounting.
- ✓ **No Fill Required:** The laser vaporizes the top coat to reveal black text.
- ✓ **Heat & Chemical Resistance:** Holds up in industrial environments where exposure to cleaners, oils, and wear is common.





DuraBlack Aluminum

DuraBlack meets several government, industrial, and military specifications because of its ability to perform across a range of challenging environments.

TECHNICAL DATA

Color	Black
Size	Up to 12"x20"
Material	Anodized Aluminum w/ DuraBlack Coating
Thickness	0.020"
UV Resistant	Yes 8-10 Years
Finish	Matte
Mounting	Industrial Tape and/or Holes

FEATURES

- ✓ **High-Res Permanent Legibility:** The matte finish reduces glare and supports high-density IUID 2D barcodes and complex electrical schematics.
- ✓ **No Fill Required:** The laser vaporizes the top coat to reveal silver text instantly.
- ✓ **Corrosion & Chemical Resistance:** Holds up in industrial environments where exposure to cleaners, oils, and wear is common.



For more information, please visit www.dura.black

Stainless Steel

Stainless steel products are durable and resistant to harsh conditions, making them ideal for industrial, outdoor, and mission-critical environments.

FEATURES

- ✓ **Extreme Durability:** Resistant to corrosion, chemicals, high temperatures, and harsh environments.
- ✓ **Permanent Identification:** Engraving that won't fade, peel, or degrade.
- ✓ **Indoor & Outdoor:** Designed to perform in demanding environments.
- ✓ **Mechanical & Adhesive Mounting Options:** Adhesive and/or hole patterns available for secure attachment.
- ✓ **Precision Fabrication:** 0.020" thick stainless steel custom sizes from 2"x1" and large as 12"x12".



TECHNICAL DATA

Material Stainless Steel (0.050", 0.030", & 0.020" Thickness)

Temperature Suitable for high heat environments

Finish Brushed & Tumbled

Marking Method Engraved

Permanent. Durable. Built for Harsh Environments.

LABELS

6"x3" | 4"x4" | 4"x2" | 3"x1.5" | 3"x1"



VALVE TAGS

1.25" | 1.5" | 2"



CABLE TAGS/LABELS

2"x0.5" | 3.5"x0.7"



Material	Stainless Steel
Finish	Brushed & Tumbled
Indoor Outdoor	✓
Abrasion Resistant	✓
Chemical Resistant	X
Corrosion Resistant	✓
UV Resistant	✓
Material Thickness	0.050", 0.030", 0.020"
Mounting	0.1875" Holes or Adhesive
Standard Font Size	1/4"
Standard Text Color	Black

Brass

Brass products are designed for applications where durability and longevity are required, making them ideal for industrial, outdoor, and mission-critical environments.

FEATURES

- ✓ **Extreme Durability:** Resistant to corrosion, chemicals, and high temperatures.
- ✓ **Permanent Identification:** Engraving that won't fade, peel, or degrade.
- ✓ **Indoor & Outdoor:** Designed to perform in demanding environments.
- ✓ **Mechanical & Adhesive Mounting Options:** Adhesive and/or hole patterns available for secure attachment.
- ✓ **Precision Fabrication:** 0.020" thick brass custom sizes from 2"x1" and large as 12"x12".



TECHNICAL DATA

Material	Brass (0.040", 0.020" Thickness)	Temperature	Suitable for high heat environments
<hr/>		<hr/>	
Finish	Brushed & Tumbled	Marking Method	Engraved

Permanent. Durable. Built for Harsh Environments.

LABELS

3"x1" | 2"x1"



VALVE TAGS

1.25" | 1.5" | 2"



SURVEY MARKERS

2" | 2.5" | 3" Round Flat & Domed Top



Material	Stainless Steel
Finish	Brushed & Tumbled
Indoor Outdoor	✓
Abrasion Resistant	✓
Chemical Resistant	✗
Corrosion Resistant	✓
UV Resistant	✓
Material Thickness	0.050", 0.030", 0.020"
Mounting	0.1875" Holes or Adhesive
Standard Font Size	1/4"
Standard Text Color	Black

Our Mission + Vision

To support large-scale electrical construction projects with accuracy, speed, and reliability. We exist to eliminate friction in the labeling process, turning complex specifications into organized, install-ready engraved identification systems.

Our vision for the future is to become the national standard in engraving for the electrical construction industry, defined by speed, accuracy and the highest quality customer service.



Data Centers
Healthcare Facilities



Industries & Project Types

Renewable Energy /Solar
Distribution & Logistics



HVAC
Institutional & Commercial Buildings

Large Scale

laser capacity supports both one-off rush orders and large, multi-phase projects.



99%+

order accuracy across high-volume production. Built for accuracy at scale.



15 min.

or less response time, designed to eliminate delays and keep your project moving forward.



95%+

of our orders ship out within 24hrs. Shipping is always free and never price impacting.



We operate with the urgency and structure that commercial job sites demand, ensuring our clients stay on schedule, playing a critical role in delivering a smooth project turnover.

Billion-Dollar Hospital Expansion

Client | Sullivan & McLaughlin Co.

Project | Large Hospital Expansion

- Multi-billion dollar hospital expansion project consisting of 482 inpatient rooms across 9 levels.
- Sullivan & McLaughlin Co. struggled to find an engraver capable of manufacturing the volume on the aggressive timeline the project required.
- Action Engraving stepped in as a high-volume partner capable of meeting the project's speed and scale requirements.
- Through rapid quoting, structured workflows, and consistent on-time delivery, we ensured Sullivan & McLaughlin's engraving never became a bottleneck.
- Each order was delivered organized and ready for installation, reducing field coordination and rework.

11,000 +

Engraved stainless steel wall plates

9 Levels

Delivered in phased, bi-weekly timelines

Field Ready Packaging

Organized by level, packaged by room & plate type



I would use Action Engraving anytime for any project. Their work is consistently professional, clean, and well organized. Communication is also excellent. They are responsive, clear, and easy to work with.

Rich Souther, Sullivan & McLaughlin Co.



Multi-Phase Data Center Build

Client | Tri-City Electric

Project | Data Center Build

- 1,391 acre, \$10 billion, multi-phase Data Center campus in Cedar Rapids, IA.
- Tri-City needed a partner who could delivery consistent engraving across a wide range of labels while also supporting the project's volume.
- Action Engraving delivered consistency and high-volume production through a process-driven approach.
- Rapid quoting, repeatable workflows, and dependable turnaround times ensured Tri-City's orders remained accurate and on schedule.
- Each order was packaged for installation, helping crews work efficiently.



I've worked with Action Engraving on a large data center project and have placed countless orders with them, including very large quantity orders. Their team has consistently delivered high-quality products with quick turnaround times, even at scale.

Customer service has been great throughout the entire process. They're easy to work with, responsive, and always willing to make sure everything is done correctly. Even when we've had specific or custom requests, they've been able to accommodate without any issues.

Shipping has been fast and reliable, and their pricing is very competitive. Overall, I'd highly recommend Action Engraving to anyone looking for dependable service and quality engraving work.

Andrew Penticoff, Tri-City Electric

10,000 +

Engraved phenolic labels of multiple sizes and color, maintaining consistency with every order

3 Buildings

Delivered on-time, every time

Field Ready Packaging

Organized & packaged
by label color and size



2 Easy Ways

To Get Your Quote in Minutes



1. Visit our website at www.action-engraving.com

Click on "Request a Quote"

Complete the Web Form & Click Submit

2. Send us an email at orders@action-engraving.com